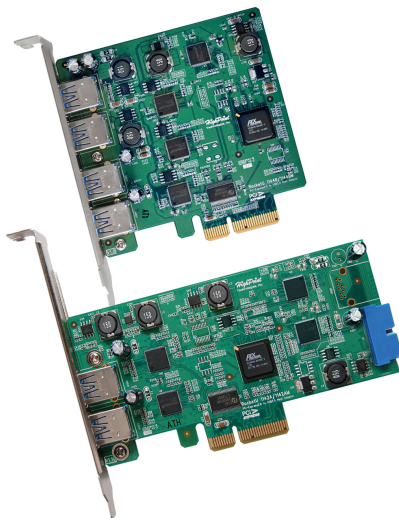


RocketU 1144D/1142A



Quick Installation Guide

V1.00

Table of Contents

HighPoint RocketU 114x	3
Kit Contents	4
Board Layout.....	4
Installing the RocketU Series Host Adapter	5
Using the 19PIN USB 3.0 Front Panel Port of the RocketU 1142A.....	5
Driver Installation (Microsoft Windows).....	6
Connecting USB Storage Devices	7
Customer Support.....	7
FCC Part 15 Class B Radio Frequency Interference statement	8

HighPoint RocketU 114x

HighPoint USB 3.0 HBA's – High-Performance External Storage for Your PC

HighPoint has capitalized on recent advances in USB 3.0 connectivity, and has made 5Gb/s per-port performance a reality. USB 3.0 is no longer limited to plug-and-play device hubs; RocketU HBA's take External USB 3.0 storage to the next level.

HighPoint's Third generation 4-Port USB 3.0 HBA

Boasting four dedicated 5Gb/s external USB 3.0 Type-A ports, and powered by a PCIe 2.0 x4 host interface, the RocketU 114x is the industry's fastest USB host bus adapter, and is ideal for high-speed SATA 6Gb/s SSD's and hard drives.

The RocketU 114x has been optimized for maximum USB 3.0 device compatibility, including 4TB and larger SATA 6Gb/s hard disks and the latest SSD's.

RocketU 1144D: Supports all industry standard USB 2.0/3.0 Devices

In addition to high-performance storage devices, the RocketU 1144D supports industry standard USB 2.0 and 3.0 peripherals, such as device hubs, card readers and interface devices.

Key Features

- PCI-Express 2.0 x4
- Total Transfer Bandwidth up to 20Gb/s
- Two Super Speed USB 3.0 type-A ports and one 10Gb/s Internal USB 3.0 Front Panel Port (RocketU 1142A)
- Optimized for external USB drives and drive enclosures
- Optimized for industry standard USB 3.0 devices

- Backwards compatible with USB 2.0 & 1.1
- Driver support for Microsoft Windows 8, 7, 2008, Vista
- Linux OS support with Linux Kernel embedded USB 3.0 driver (Require Kernel v2.6.31 or later)
- Compliant with xHCI (Extensible Host Controller Interface) spec.

RocketU 114x Series HBA Family:

RocketU 1144D - 4 USB 3.0 Type-A Ports

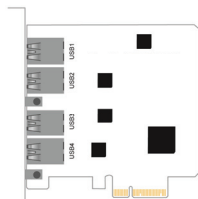
RocketU 1142A - 2 external USB 3.0 Type-A Ports and 1 19pin Ports

Kit Contents

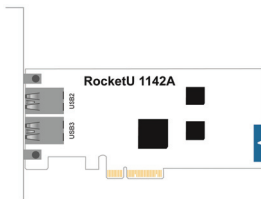
- RocketU 1144D/1142A host controller
- Quick Installation Guide
- Low profile bracket(For RocketU 1142A only)

Board Layout

RocketU 114x PCB board Layout



RocketU 1144D



Installing the RocketU Series Host Adapter

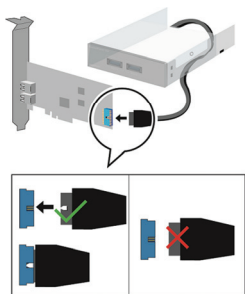
Note: Make sure the system is powered-off before installing the RocketU series host adapter.

1. Open the system chassis.
2. Locate an unused PCI-Express ×4 (×8, ×16) slot.
3. Remove the PCI-Express slot cover.
4. Gently insert the RU series into the PCI-Express slot, and secure the bracket to the system chassis.
5. After installing the adapter, attach the hard disks or disk enclosure to the RU series card using the USB cables.
6. Close and secure the system chassis.

Using the 19PIN USB 3.0 Front Panel Port of the RocketU 1142A

The RocketU 1142A provides standardized USB 3.0 front panel support. It is compatible with any standard USB 3.0 front panel device such as the RocketPanel Series USB 3.0 front panel adapter or the USB 3.0 all in one card reader front panel adapters.

Note: Make sure the system is powered-off before installing the USB 3.0 Front Panel device.



Driver Installation (Microsoft Windows)

1. Download the Windows Driver package from HighPoint website:
2. Extract the software package to a Windows folder:
C:\RocketU\Windows
3. Double click the “setup.exe” and follow the setup wizard steps to install the ASMedia ASM1042x USB 3.0 Host controller driver.

Note: ASMedia ASM1042x driver was embedded into Windows 8 OS.

Verify Installation of the Software

1. On the Start menu, select 'Control Panel'.
2. Open on the 'System' applet (you may first have to select 'Switch to Classic View').
3. Select the 'Hardware' tab → 'Device Manager' button.
4. For Win7, 2008, Vista, Expand the 'Universal Serial Bus Controllers' entry

5. Right-click on 'ASMedia xHCI Controller'.
6. Select 'Properties' → 'Driver' tab → 'Driver Details' button.
7. The follow file should be displayed, then installation was successful:
- 'system32\DRIVERS\asmtxhci.sys'

Connecting USB Storage Devices

1. Make sure the RocketU 114x has been installed into your PC.
2. Connect the enclosure or hard disk to the HighPoint RocketU HBA with USB 3.0 cables.
3. Allow the drives/enclosure to spin up for a few moments. Once the devices are ready, they will be recognized by the operating system and can be accessed as needed.

Customer Support

If you encounter any problems while utilizing the RocketU series host adapter, or have any questions about this or any other HighPoint Technologies, Inc. product, feel free to contact our Customer Support Department.

Web Support: <http://www.highpoint-tech.com/websupport/>

HighPoint Technologies, Inc. websites:
<http://www.highpoint-tech.com>

FCC Part 15 Class B Radio Frequency Interference statement

This equipment has been tested and found to comply with the limits for a Class B digital device, pursuant to part 15 of the FCC Rules. These limits are designed to provide reasonable protection against harmful interference in a residential installation. This equipment generates uses and can radiate radio frequency energy and, if not installed and used in accordance with the instructions, may cause harmful interference to radio communications. However, there is no guarantee that interference will not occur in a particular installation. If this equipment does cause harmful interference to radio or television reception, which can be determined by turning the equipment off and on, the user is encouraged to try to correct the interference by one or more of the following measures:

- Reorient or relocate the receiving antenna.
- Increase the separation between the equipment and receiver.
- Connect the equipment into an outlet on a circuit different from that to which the receiver is connected.
- Consult the dealer or an experienced radio/TV technician for help.

Modifications not expressly approved by the manufacturer could void the user's authority to operate the equipment under FCC rules.

This device complies with part 15 of the FCC Rules. Operation is subject to the following two conditions: (1) this device may not cause harmful interference, and (2) this device must accept any interference received, including interference that may cause undesired operation.

European Union Compliance Statement

This Information Technologies Equipment has been tested and found to comply with the following European directives:

- European Standard EN55022 (1998) Class B
- European Standard EN55024 (1998)

Copyright 2015 HighPoint Technologies, Inc. All right reserved.