



# **SSD7101A-1**

**Ultimate Acceleration Drive**

**Quick Installation Guide**

**V1.00**

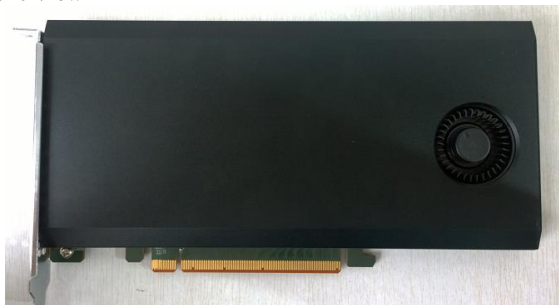
## System Requirements

### PC Requirements

- System with an empty x16 PCIe 3.0 slot  
(Please refer to the SSD7101A-1 [compatibility list.](#))
- Windows 10 or later
- Linux Kernel 3.19 or later

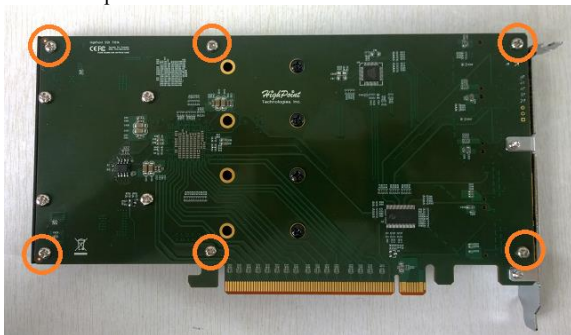
### SSD7101A-1 Hardware

#### Front View



## NVMe Drive Installation:

Step 1. On the rear of the SSD7101A-1, remove the six screws that secure the unit's front panel to the PCB.



After removing the screws, carefully remove the front panel from the SSD7101A-1.

Step 2. These 4 screws are used to install the NVMe SSD's.



Step 3. The SSDs should be installed from top to bottom. Remove the top screw.



Step 4. Gently insert the SSD into the slot.



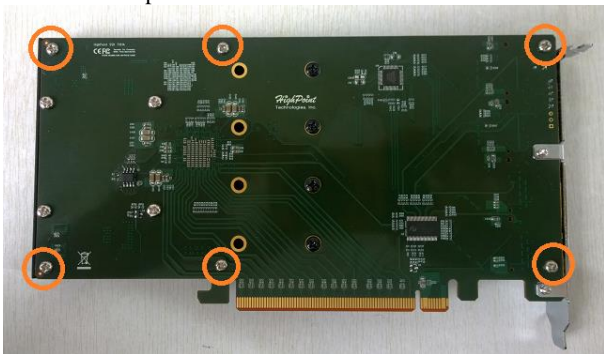
Step 5. Refasten the screw to secure the SSD.



Repeat Steps 3 to 5 to install the remaining SSDs.

Step 6. Replace the front panel after installing all SSDs

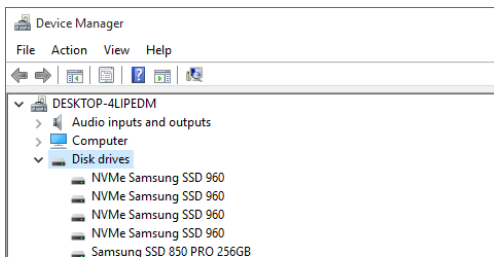
Step 7. On the rear of the SSD7101A-1, refasten the 6 screws that were removed in step 1.



# Setting up the SSD7100 for a Windows operating system

## 1. Verifying Installation

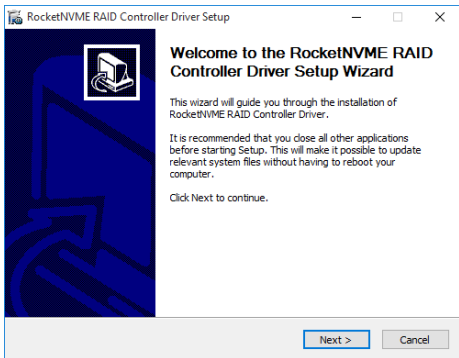
After booting Windows, open **Device Manager**, and expand **Disk drives**. The installed NVMe Samsung SSD 960 should be displayed:



## 2. Driver Installation

- 1) Download the Windows driver package from the HighPoint website: [http://highpoint-tech.com/USA\\_new/series-ssd7101a-1-download.htm](http://highpoint-tech.com/USA_new/series-ssd7101a-1-download.htm)
- 2) Once downloaded, locate the folder you downloaded the driver to. Extract the driver package and double click the **setup.exe** file to start the driver installation.





- 3) Follow the wizard and reboot system to complete the driver installation.
- 4) Rebooting. A **RocketNVME RAID Controller** entry should be displayed under **Storage Controllers.**:

### 3. Installing the HighPoint SSD Manager

The HighPoint NVMe Manager is used to configure and monitor the SSD7100 drive. Download the HighPoint SSD Manager software package from the HighPoint website:

[http://highpoint-tech.com/USA\\_new/series-ssd7101a-1-download.htm](http://highpoint-tech.com/USA_new/series-ssd7101a-1-download.htm)

- 1) Extract the package and double-click the setup.exe program to install the software.
- 2) The HighPoint SSD RAID Manager will configure the SSD7100 NVMe drive automatically after installation is completed.
- 3) Open Windows Disk Management and check to make sure the SSD drive is configured:
- 4) Create and format the partition using Disk Management and start using

the SSD7100 drive.

## **Setting up the SSD7100 for a Linux Distribution**

Please download the Linux Software Package from the HighPoint Website:

[http://highpoint-tech.com/USA\\_new/series-ssd7101a-1-download.htm](http://highpoint-tech.com/USA_new/series-ssd7101a-1-download.htm)

Please follow the Linux Installation guide included with the software package the software package to install and setup the SSD7100 drive.

## **Customer Support**

If you encounter any problems while utilizing the SSD7100 drive, or have any questions about this or any other HighPoint Technologies, Inc. product, feel free to contact our Customer Support Department.

Web Support: <http://www.highpoint-tech.com/websupport/>

HighPoint Technologies, Inc. websites:

<http://www.highpoint-tech.com>

*© Copyright 2017 HighPoint Technologies, Inc. All rights reserved.*